

**SchoolBooks – S15**

# **Consolidated Reporting**



**CONNECTIONS 2007**



# Agenda

- Definition – Combining School Data
- Setup in School Settings
- School Group Maintenance
- My Consolidated Reports
  - New! Ability to save pre-defined formats
  - New! Bank Rec Status Report
  - What else? What do you want?



---

CONNECTIONS 2007



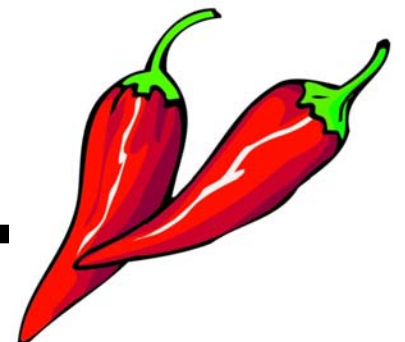
# Definition – What are they?

- Use this feature to combine data for multiple schools.
- What happens?
  - Program copies data from all schools into one big file – CONSHIST – with Schl Code.
  - Reports extract the data you want.

Where is it? Management/Special Functions/Consolidations

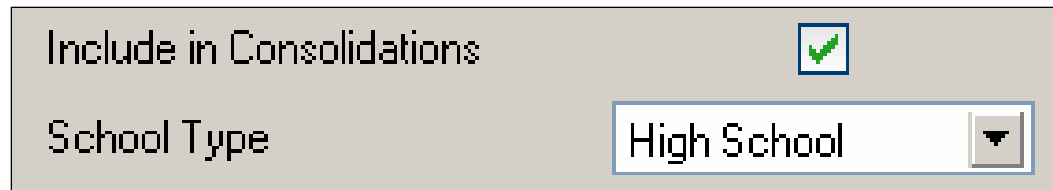


CONNECTIONS 2007



# Setting it Up

- Load each school's data into one copy of SB (so the program can see all of them at once).
  - If you have Client/Server, this is already done.
  - If you don't, restore a backup from each separate school onto your computer.
- Management\Customize\School Settings – for each school:
  - Check the Consolidation checkbox.
  - Enter the type of school. Used for grouping purposes.

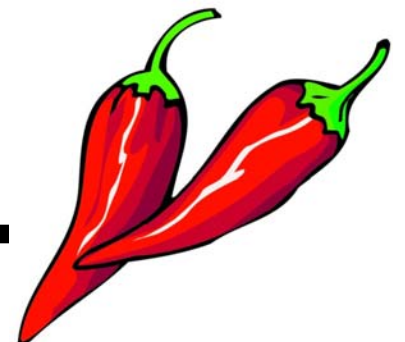


Include in Consolidations

School Type High School ▼



**CONNECTIONS 2007**



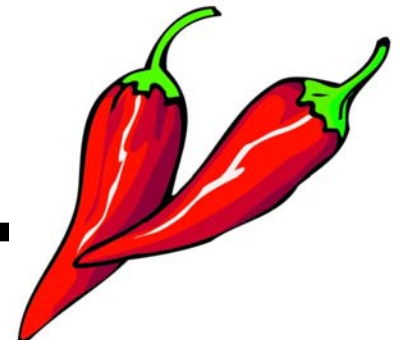
# School Group Mntce – New!

Select	Code	Name	Type
<input checked="" type="checkbox"/>	ABCELEM	ABC Elementary School	Elem
<input checked="" type="checkbox"/>	SWES	Southwest Elementary School	Elem
<input type="checkbox"/>	WESTMS	West Middle School	Midd
<input type="checkbox"/>	ZPLAY	Play School High School	High

- Define groups of schools for reporting.
- Choose all one type or by size or ??

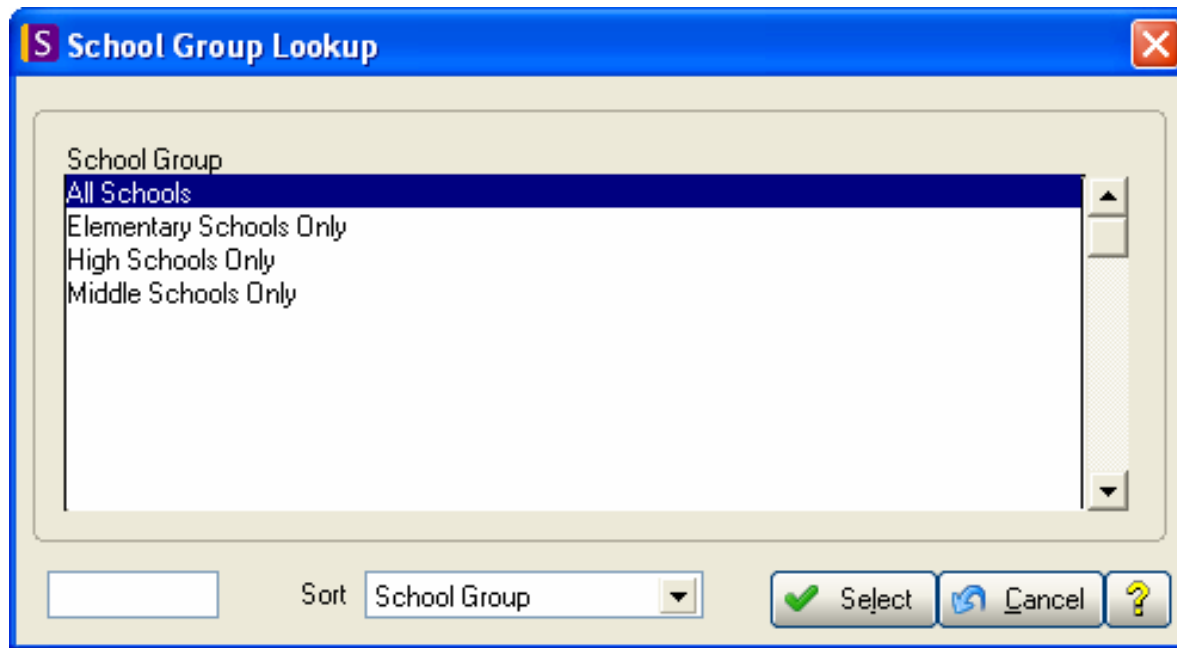


CONNECTIONS 2007

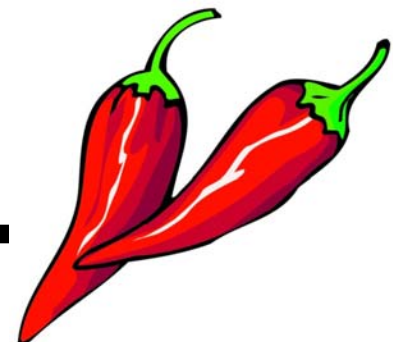


# School Group Mntce

- Set up as many groups as you'd like.
- Change them as needed.



CONNECTIONS 2007



# Report Selection

**S My Consolidated Reports**

Report Name: High Schools Only - Athletic Accounts

School Group Name: High Schools Only

Report Type: Summary By GL Account

Selection	All	Starting	Ending
Account Number	<input type="checkbox"/>	2210-10-10 Volleyball ~ Boys	2230-10-10 Varsity Football
Date	<input type="checkbox"/>	07/01/06	01/31/07

Filter: ..

Summarize Level: ..

Only Accounts With Activity:

**Consolidation**

Reconsolidate School Group:

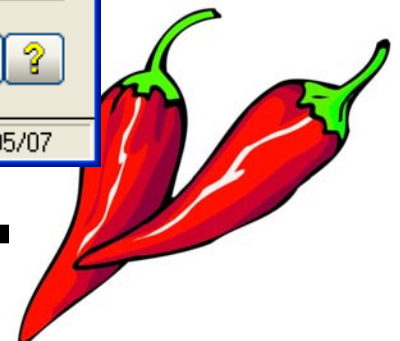
Reconsolidate One School:  School Code:

EPSON Stylus C86 Series on Ne09: [Print] [Preview] [Cancel] [Setup] [?]

School code: SWES 03/05/07



CONNECTIONS 2007



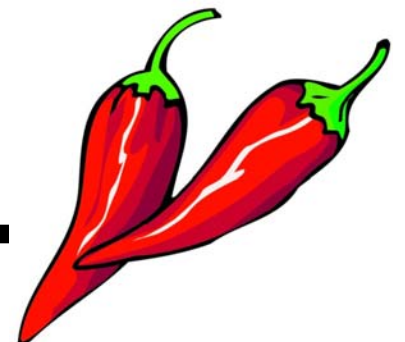
# Report Selection Options

- Save report name and setup.
- Save the School Group for this report.
- Save the GL Account range selected.
- Save the date range selected.
- Optionally, re-run the consolidation -
  - for all schools.
  - for only one school.



---

CONNECTIONS 2007



# Summary by School

Consolidated Report

## CONSOLIDATED REPORT - SUMMARIZED BY SCHOOL

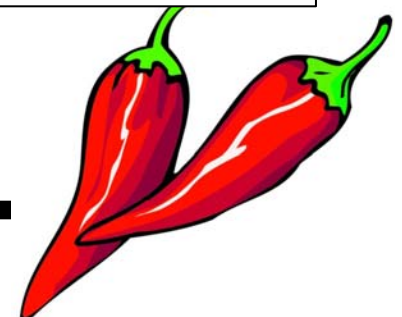
Date Range: Through 3/5/2007

Account Range: ALL

ACCOUNT # AND DESCRIPTION	BEG BALANCE	INCOME	EXPENSE	TRANSFERS	BALANCE
<b>Elementary Schools</b>					
Bitter Springs Elementary Scho	38,439.41	19,145.86	19,118.43	0.00	38,466.84
	<u>38,439.41</u>	<u>19,145.86</u>	<u>19,118.43</u>	<u>0.00</u>	<u>38,466.84</u>
<b>High Schools</b>					
EW Patterson High School	297,432.86	216,066.89	202,795.62	0.00	310,704.13
Play School High School	38,721.57	31,960.69	6,882.20	0.00	63,700.06
Play School High School (2)	38,721.57	31,846.69	6,882.20	0.00	63,686.06
Play School High School (3)	38,721.57	31,846.69	6,882.20	0.00	63,686.06
West Glacier High School	364,266.15	615,066.74	498,040.46	16,006.00	497,298.43
	<u>777,863.72</u>	<u>926,787.70</u>	<u>721,582.68</u>	<u>16,006.00</u>	<u>999,074.74</u>
<b>Middle Schools</b>					
Yarrow West Middle School	0.00	31,846.69	6,882.20	0.00	24,964.49
	<u>0.00</u>	<u>31,846.69</u>	<u>6,882.20</u>	<u>0.00</u>	<u>24,964.49</u>
	<u>816,303.13</u>	<u>977,780.25</u>	<u>747,583.31</u>	<u>16,006.00</u>	<u>1,062,506.07</u>



CONNECTIONS 2007



# Let's Walk Through It! Or Questions & Answers



---

CONNECTIONS 2007

